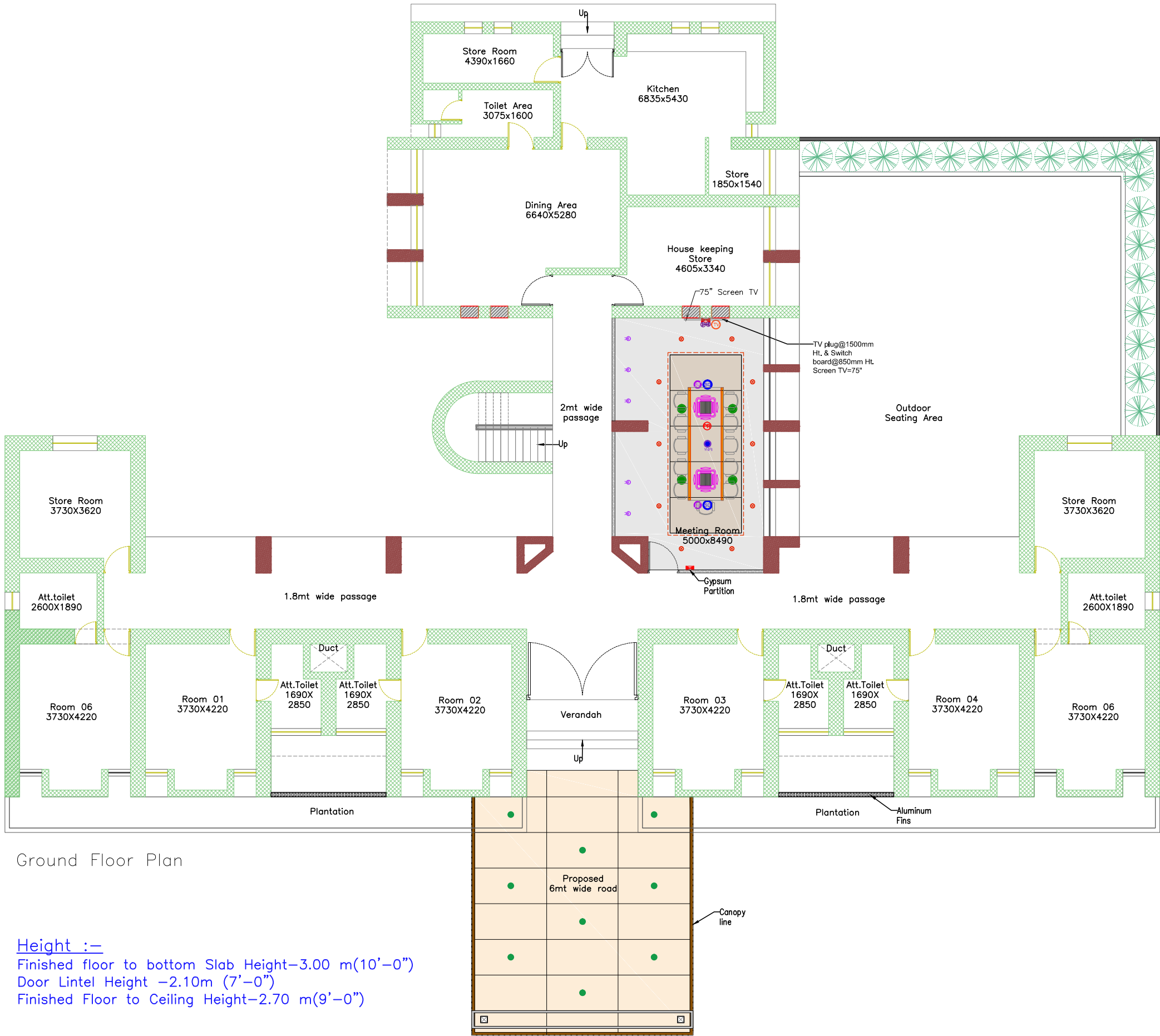


LAST SAVED BY: iparikh 19/5/25 1:16 PM  
PLOTTED BY: Khyati M. Parikh  
This drawing is property of Mamta Shah & Associates. Without our prior consent, it must be neither copied nor made available to third parties for the purpose other than for which it is meant.



Ground Floor Plan

Height :-  
Finished floor to bottom Slab Height-3.00 m(10'-0")  
Door Lintel Height -2.10m (7'-0")  
Finished Floor to Ceiling Height-2.70 m(9'-0")

Ceiling material Legend	
Hatch	Material finish
	Gypsum ceiling
	VNR Laminate
	ACP Woody Ceiling

Lighting fixture Legend	
Symbol	Description
	Recessed mounted Led Profile light
	circle Wall washer light-adjustable
	Recessed mounted Led down lighter-1
	Cover light

HVAC Legend	
Symbol	Description
	4 way Cassette AC

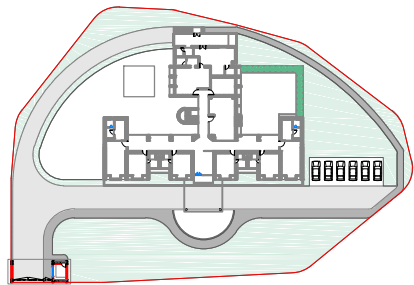
Legend for electrical		
Symbol	Wall mounted lighting	Height SB
	Main Switch board	1200
	6 - AMP Plug point	As per detail
	16 - AMP Plug point	
	5 AMP Plug point with switch	
	15 AMP Plug point with switch	1050
	TV Cable = 2 nos.-5 amp plug point @3'6" height.	

ELV Legend	
Symbol	Fixture
	Speaker
	Smoke Detector
	Above Ceiling Smoke Detector
	WIFI
	Projector Stand

General Notes :

Legends for hatch	
	Existing Brick wall masonry
	Proposed Brick wall masonry
	Existing RCC Structure

Key Plan:



Project: GMDC Township Development

Drawing: RCP Layout \_ Ground Floor  
VIP Guest House  
Sheet 01

Drawing Code: 2310\_INT\_TD\_GHB\_FLC\_R2

Print Size: A2 Scale: 1:100

File Title: 2310\_INT\_TD\_GHB\_FLC\_R2

Project Code: MSA 2310	Project Type: Arc & Int	Location: Ambaji
Print Date: 19-May-25	Drawn By: K Parikh	Checked By: K Patel
		Approved By: M Shah

MAMTA SHAH & ASSOCIATES  
Architects & Interior Designers  
C-12, Chanakyapuri Society,  
Chanakyapuri Char Rasta,  
New Sama Road, Baroda  
Ph. No. +91 265 2712267 / 2710967  
mamta@msain.com / www.msain.com

Client: Gujarat Mineral Development Corporation

